

# ITS Canada Conference 2007

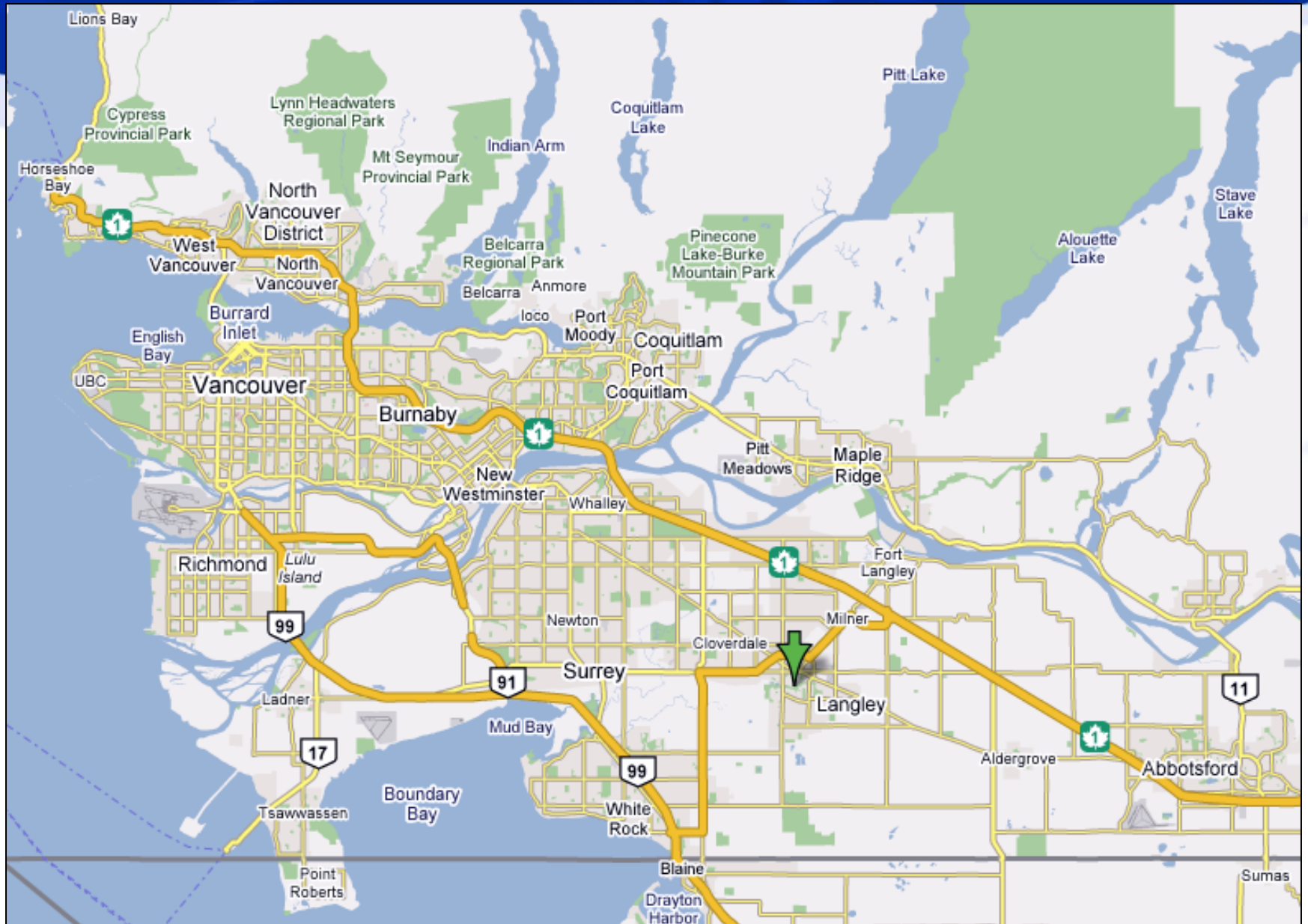
## XML Workshop

### *XML Applications at TransLink*

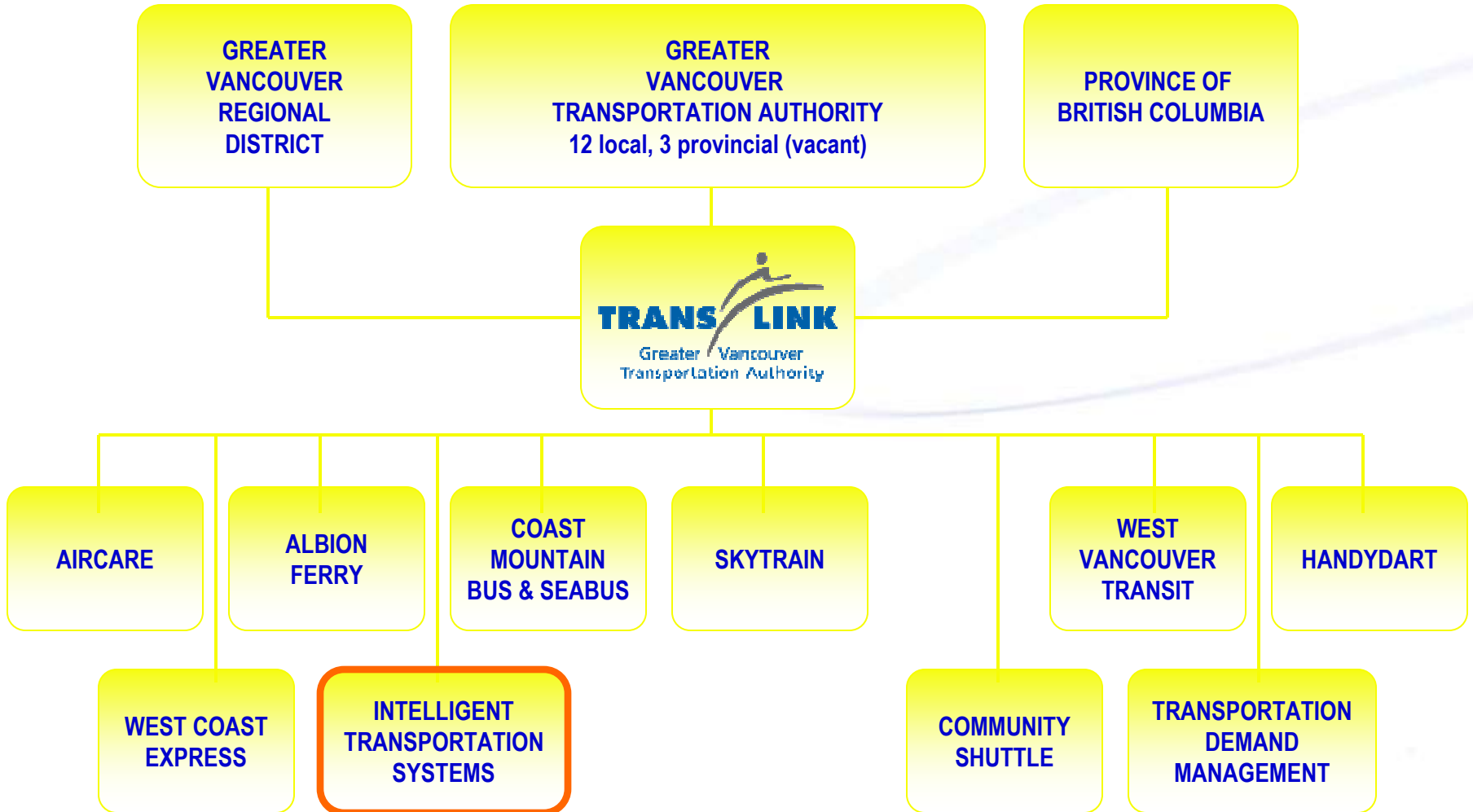
*James Fam, P.Eng.  
Project Manager  
ITS Department, TransLink  
May 2, 2007*



# Greater Vancouver Transportation Authority



# TransLink Today



# The ITS Corporation of BC

- Formed in Feb 2000 to guide the deployment of ITS in the region and BC
  - Major transportation agencies from federal, provincial, regional, municipal, and university sectors
  - Private sector
- Developed “The Plan” – the Provincial ITS Vision and Strategic Plan (Nov 2001)
  - 23 initiatives, 66 projects, architecture
  - 3 areas of focus – movement of goods, people, and information

# Who are the Major Players in ITS?

## **ITS Corporation**

- TransLink
- Greater Vancouver Municipalities - MRTAC
- Vancouver Port Authority
- Ministry of Transportation (HQ & Gateway Program)
- Transport Canada
- ICBC
- PACE
- UBC
- E-Comm

## **Other Organizations**

- VANOC TAC ITS Sub-Committee
- VPA – Transportation Logistics Program
- UBC Bureau of ITS and Freight Security (BITSAFS)
- IMTC & Border Agencies
- Ministry of Transportation – Gateway TIMP

# Provincial ITS Vision and Strategic Plan

## Provincial ITS Vision Goals Strategy & Guiding Principles

### Movement of People

1. Regional Traffic Management
2. Regional TDM Applications
3. Ground Transportation Management at Terminals
4. Small City/Urban Area Traffic Management
5. Rural Incident Management
8. Urban Transit Operations
10. Electronic Toll Collection
16. Regional Emergency Management

### Movement of Goods

12. Safety & Legal Assurance Compliance Data Collection, Dissemination & Sharing
13. Roadside Electronic Screening
14. Enhanced Border Clearance for Cargo & Vehicles
15. Intermodal Freight Management
17. Dangerous Goods Incident Response

### Movement & Integration of Information

6. Regional Traveler Information
7. Rural Traveler Information
9. Transit Information
11. Multi-Application Smart Card
18. Information Warehouse



19. Telecommunications Plan
20. Regional ITS Architectures
21. ITS Market Study

22. ITS Outreach & In-Reach
23. Integrated Traffic Management Centre

# iMove™



**iMove**  
Intelligence in motion

Trip Calculations | Weather | Search

Keeping Greater Vancouver Moving  
iMove is your one stop source for real time transportation information. Learn more...

Motorists | Transit | Cycling | Gateways | Visitors | Commercial

December 18, 2006

Set as default tab

Map, Cameras, Advisories

Drive BC Traveller Information

- Road Conditions
- Drive BC Road Conditions
- Highways
- Bridges and Tunnels
- Parking Information
- Park and Ride

Advertisement Report

- Current Events
- Current Incidents
- Current Construction
- Future Events
- Future Incidents
- Future Construction

Interactive Map

Save | Reset | Legend | Fullscreen Map

Current | Cameras | Weather | Traffic | Transit | Commercial | Alerts | All | Call | Cycling

Map | Satellite | Hybrid

Advertisement | Groups of Cameras | Individual Cameras | Bus Routes

Filter by: REGION: All | SEVERITY: All | Reset

TYPE:  Current Incidents  Current Construction  Current Events  
 Future Construction  Future Events  Future Service Disruptions

LOCATION	TYPE	SEVERITY	REPORTED	CLASS
11850 155A ST Surrey	Major	Major	Oct 9 2005 12:00 AM	
1110th Ave just north of No. 1	See more details >>			
16168 CREEKSIDE GROVE Surrey BC	Minor	Minor	Oct 9 2005 12:00 AM	
Incident at 16168 CREEKSIDE GROVE	See more details >>			
88th ave and 200th	Major	Major	Oct 9 2005 12:00 AM	
88th ave and 200th	See more details >>			
6858 236 st langley	Minor	Minor	Oct 9 2005 12:00 AM	
Approx 6858 236 st langley	See more details >>			
26000 56th ave aldergrove	Major	Major	Oct 9 2005 12:00 AM	
20000 50th ave aldergrove	See more details >>			
SHRIVE AUTOMATED PMS Advertisement	Minor	Minor	Oct 9 2005	

About iMove | Feedback | Sitemap | Terms & Conditions | Privacy Policy | Help

© 2006 iMove™



# Project Funding / Participation

Sponsored by the ITS Corporation

## Funding Partners

TransLink



Transport Canada



Western Economic Diversification



BC Ministry of Transportation



Vancouver Port Authority



## Participating Partners

Greater Vancouver  
Municipalities

Private Sector Providers

Public Safety Agencies

UBC

# iMove™ Concept of Operations

## Dissemination Methods

Short term

Medium term

Long term

Web Portal



Media

Kiosks

E-mail, PDA's, Phone

511



Dynamic Message Signs

In-vehicle Navigation

# iMove™ Project Phasing

- Phase 1: Web portal – 2006 to May 2007
- Phase 2: Regional Condition Reporting System – 2006 to May 2007
- Phase 3: RCRS Expansion to VPA and other users – 2007 to 2008
- Phase 4: Knight/Pattullo web cams – 2007 design, 2008 deployment
- Phase 5: iMove Multi-Media Deployment – 2008 to 2009
- Phase 6: Transit Vehicle Tracking – 2007 design, 2008 deployment
- Phase 7: Google Transit pilot – 2008
- Phase 8: Integration of GEB and Pitt River Bridge - 2008 to 2009
- Phase 9: Regional Corridor Integration – 2009 +
- Phase 10: 511 – 2009+
- Phase 11: Gateway Integration – 2009+

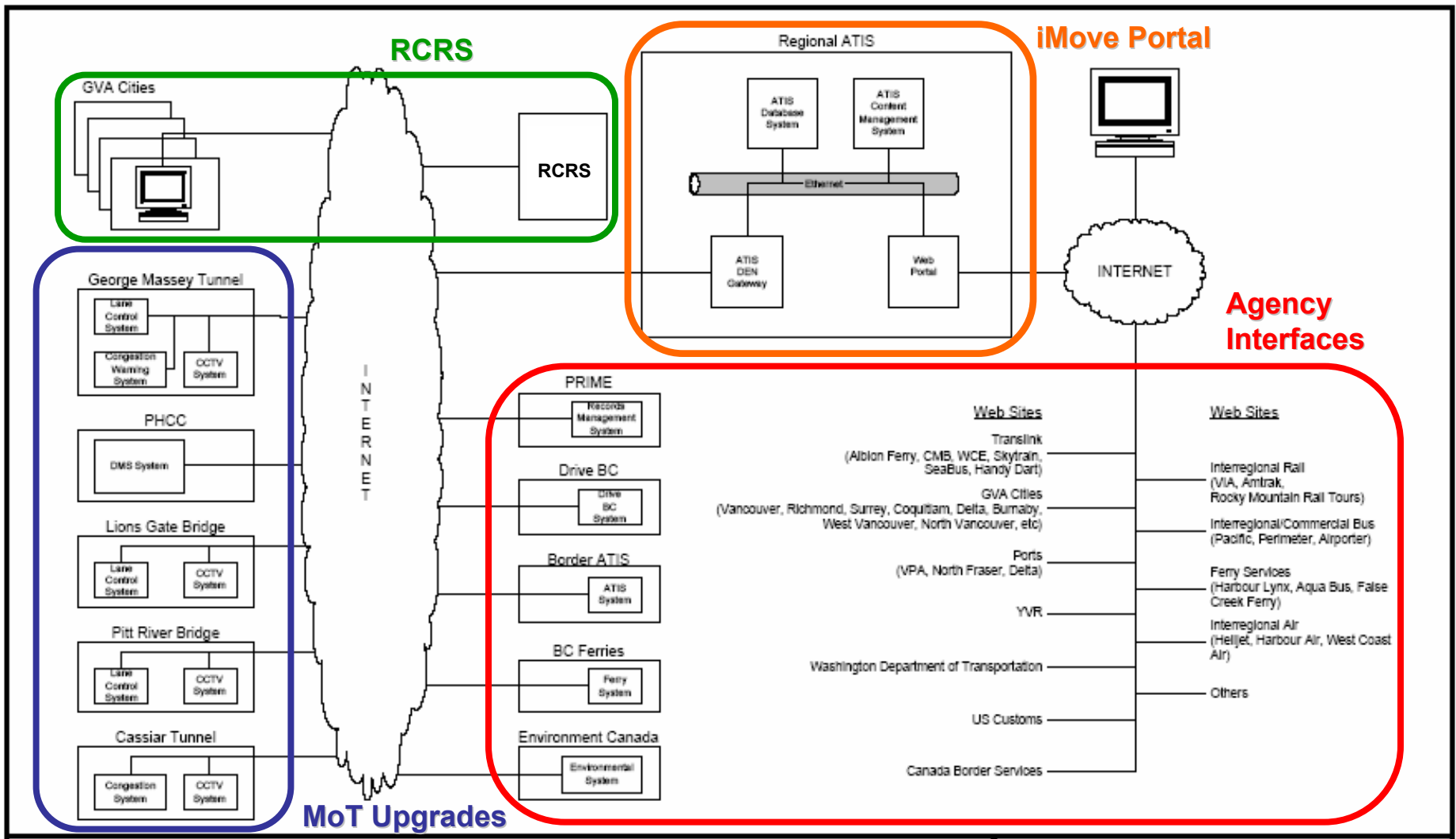
# Benefits to Users

## ***In a single web site:***

- Awareness of transit service disruptions
- Notice of planned events and construction affecting the region's road infrastructure
- Schedule/arrival information for public & private transportation services:
  - YVR (arrivals/departures, schedules, parking)
  - BC Ferries (Lower Mainland routes)
  - Private bus lines
  - Cruise ships (arrivals/connections)
  - False Creek Ferries, etc.
  - Border delays
- Improved mobility, increased reliability and reduced congestion

*... Empowers people to make better transportation choices*

# iMove™ – Technical Overview



# Regional Condition Reporting System (RCRS)

- RCRS provides the ability for contributors to enter and view:
  - Incident/accident locations & status
  - Road conditions & reports
  - Construction location, duration, & delays
  - Roadway & lane closures
  - Detour & alternate route information
  - Weather information, including warnings, watches, & RWIS
  - Special events



December 18, 2006

Lorem ipsum dolor sit amet, consectetur adipiscing elit. Duis elementum.

Set as default tab

Map, Camera, Advisories

Drive BC Traveller Information

- Road Conditions
- Drive BC Road Conditions

Highways

Bridges and Tunnels

Parking Information

Park and Ride

Advisories Legend

- Current Events
- Current Incidents
- Current Construction
- Future Events
- Future Incidents
- Future Construction

Interactive Map

Save

Reset

Legend

Fullscreen Map



Advisories

Groups of Cameras

Individual Cameras

Bus Routes

FILTER BY: Region: All SEVERITY: All Report: Report

- TYPE:  Current Incidents  Current Construction  Current Events  
 Future Construction  Future Events  Future Service Disruptions

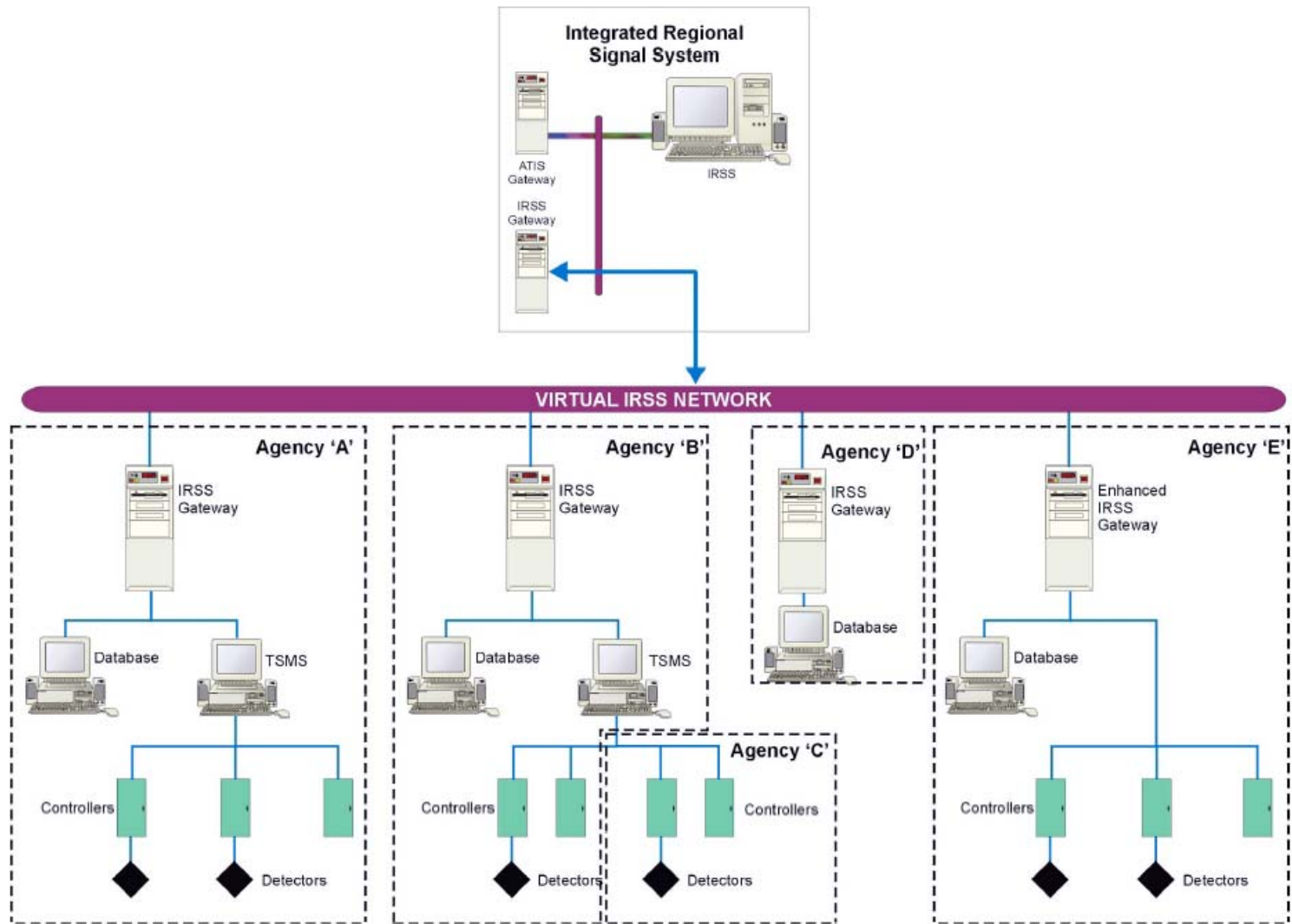
	LOCATION	TYPE	SEVERITY	REPORTED	CLEAR
1	11050 155A ST Surrey	▲	Major	Oct 9 2006 12:00 AM	
1 110th Ave just north of No. 1 See more details >>					
2	16168 CREEKSIDE GROVE Surrey BC	▲	Minor	Oct 9 2006 12:00 AM	
2 Incident at 16168 CREEKSIDE GROVE See more details >>					
4	88th ave and 200th	▲	Major	Oct 9 2006 12:00 AM	
4 80th ave and 200th See more details >>					
6	6858 236 st langley	▲	None	Oct 9 2006 12:00 AM	
6 Approx 6050 230 st langley See more details >>					
9	26000 56th ave eldergrove	●	Major	Oct 9 2006 12:00 AM	
9 26000 50th ave eldergrove See more details >>					
44	3910C AUTUMN DR Abbotsford	▲	Major	Oct 9 2006	



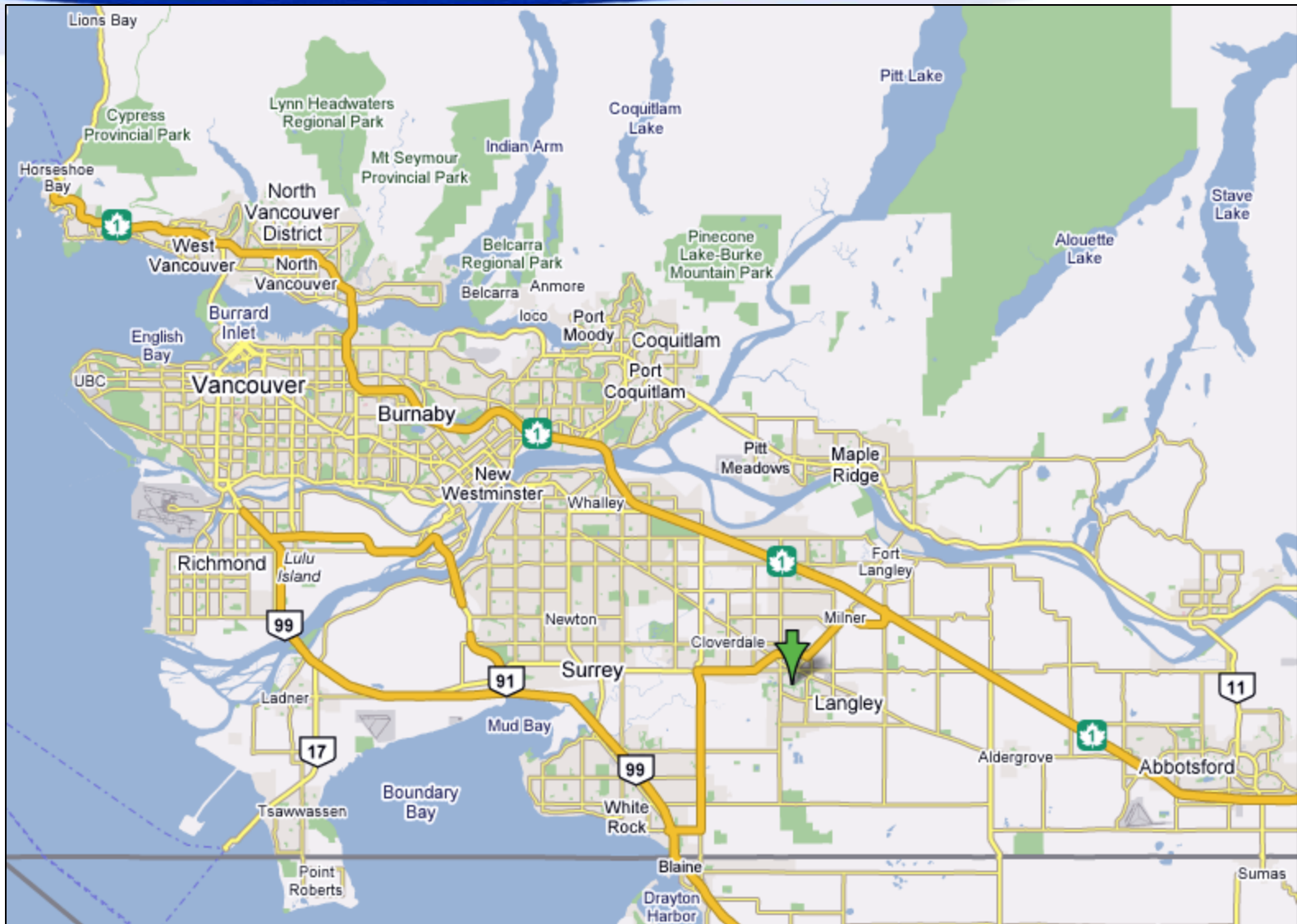
# Integrated Regional Signal System (IRSS)

- IRSS provides the ability for individual agencies to:
  - Share traffic information and data across jurisdictional boundaries to encourage common standards
  - Access to a common time source to enable coordinated operations along regional traffic corridors
  - Receive event notices between adjacent agencies to trigger special timing plans in response to measured traffic flows and special events (e.g. rail crossings)

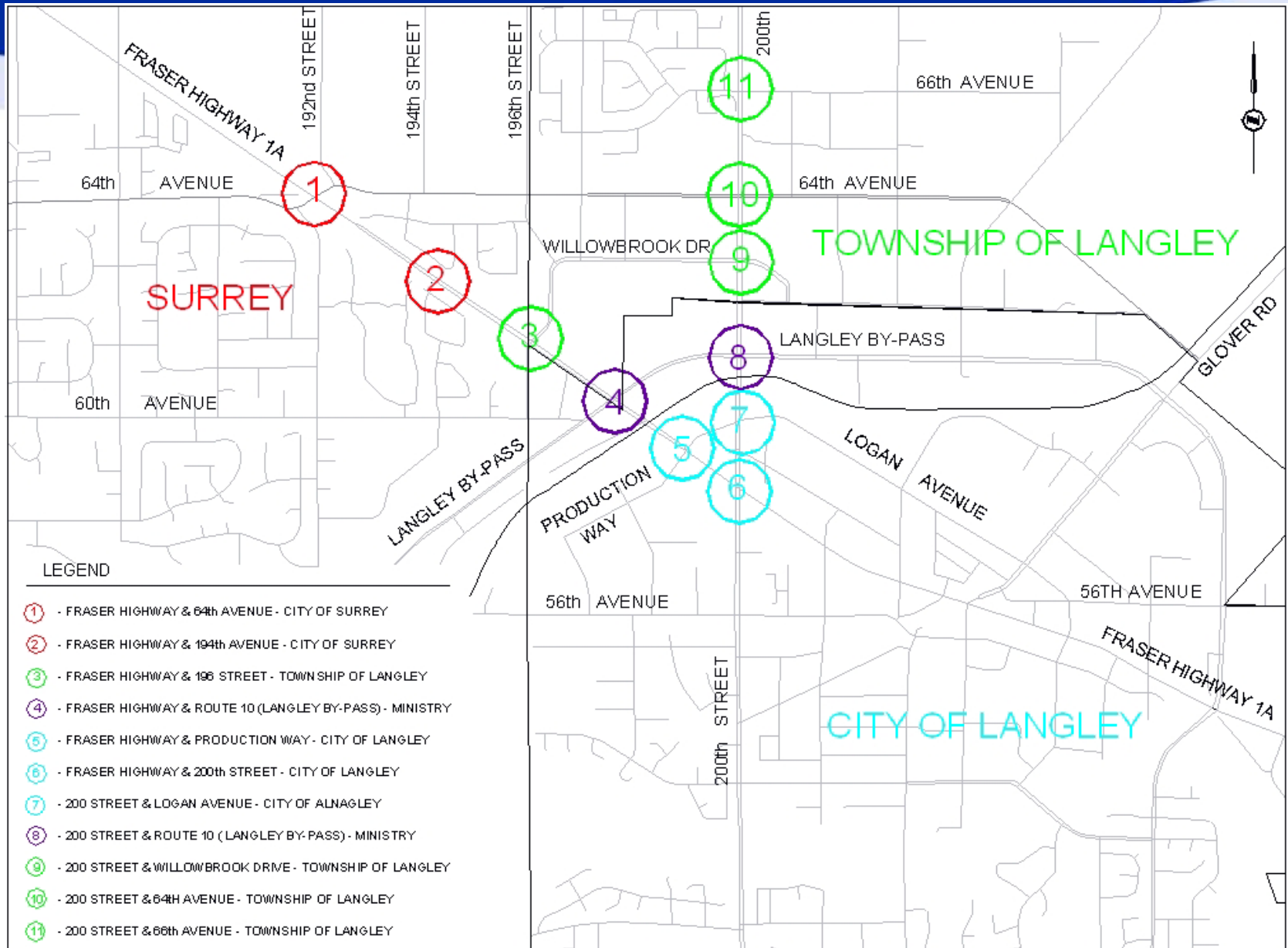
# IRSS System Concept



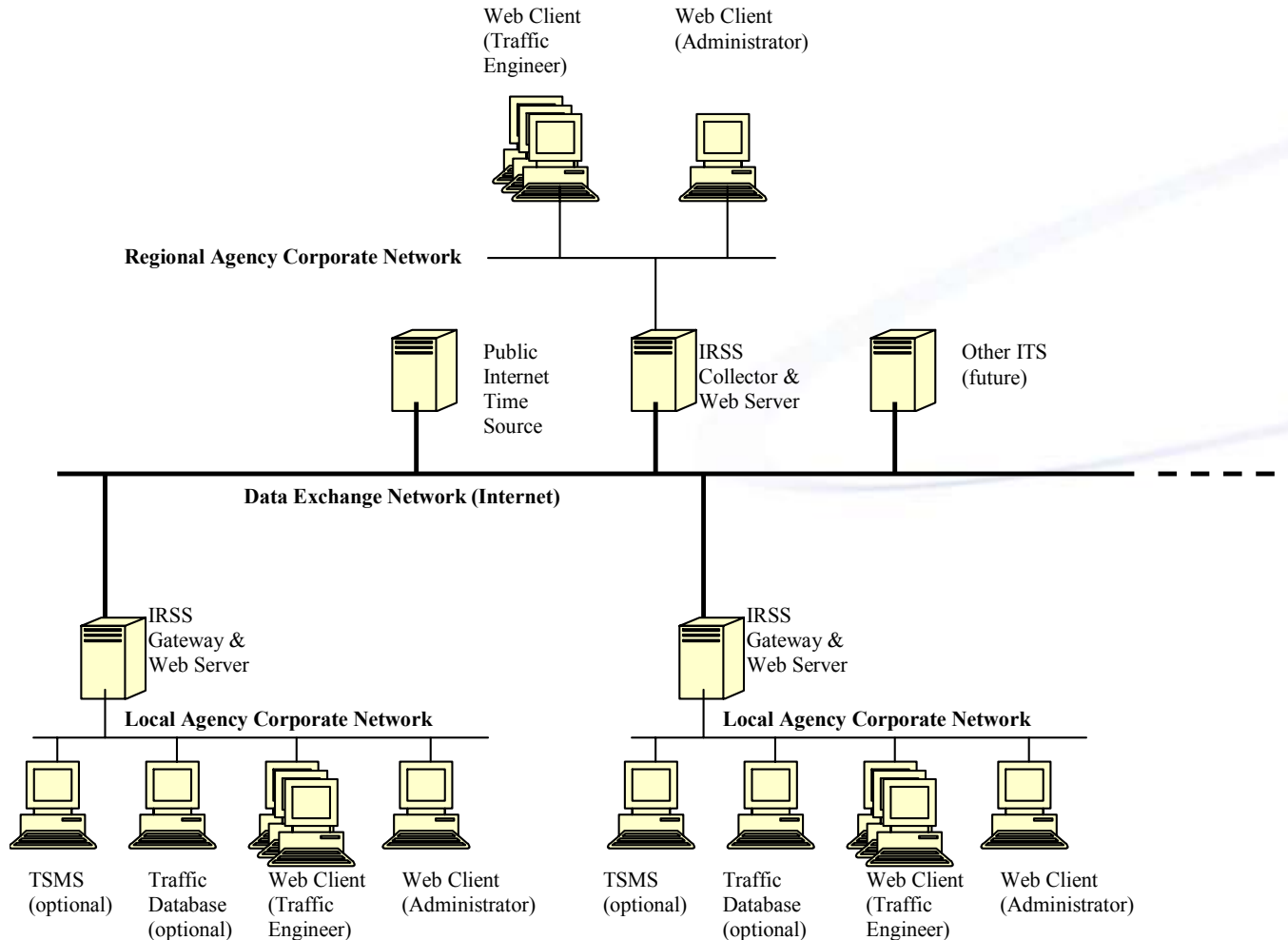
# IRSS Pilot Project



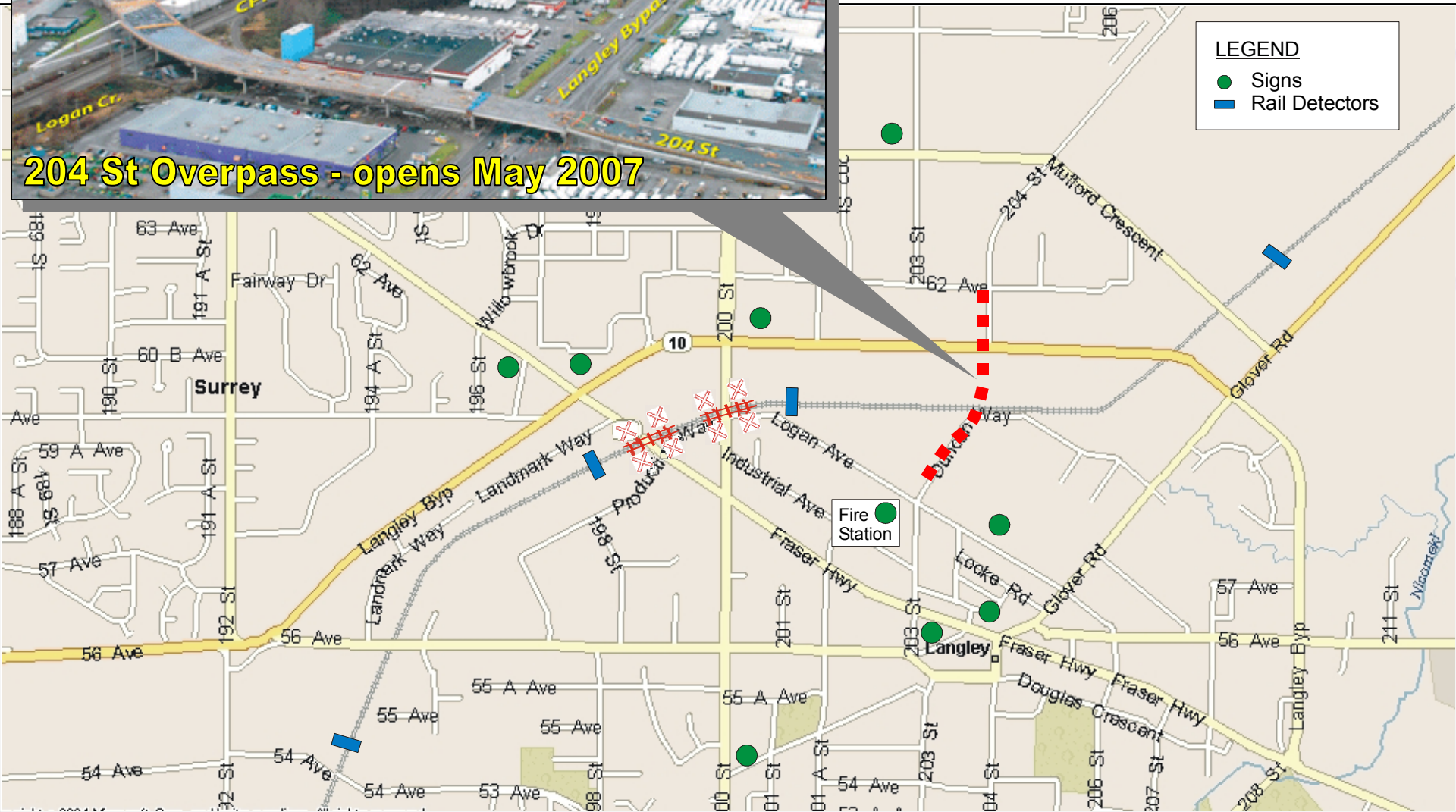
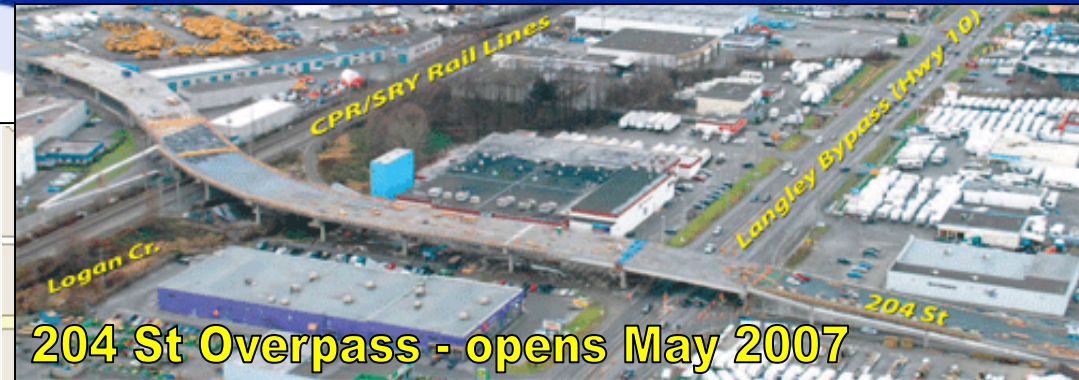
# IRSS Pilot Project



# IRSS System Network



# IRSS – Advanced Rail Warning System



# Questions?

James Fam

[james\\_fam@translink.bc.ca](mailto:james_fam@translink.bc.ca)

