

A

Business Intelligence Platform

to Support

Fact-Based Decision-Making

for Public Transit

Alec Knowles, BSc, BA, LEED AP
MAsc Candidate, University of Toronto
ITS Canada ACGM 1-4 June 2014

Poll

How many of you have...

- heard of Business Intelligence (BI) tools?
- used BI tools?
- extensive experience with BI tools?
- come to the wrong room but feel too embarrassed to leave?

Outline

- What does “fact-based decision-making” really mean?
- Why fact-based decision-making? Why BI?
- Pilot Project:
 - Background
 - Data Preparation
 - Business Intelligence Tools (MicroStrategy)
 - Lessons

What does “fact-based decision-making” really mean?

1. fact, n.

Something that has really occurred or is actually the case... as opposed to what is merely inferred...

2. decision, n.

The final and definite result of examining a question; a conclusion, judgement...

1 + 2 = A judgement based on truths known by actual observation, as opposed to what is merely inferred

Why fact-based decision-making?

not




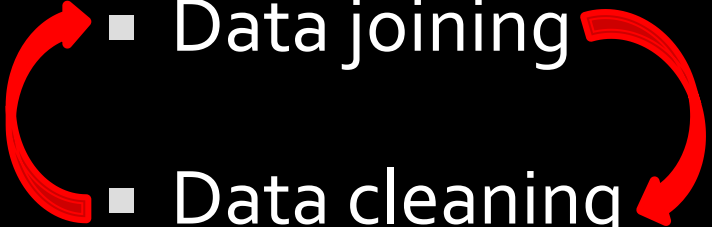
Why Business Intelligence Tools?

- Visualisations
- Aggregation is automated
 - ↳ instantaneous data slicing
- Live updating of results
 - ↳ empowers near real-time monitoring
- Consistency from one report to the next

Outline

- What does “fact-based decision-making” really mean?
- Why fact-based decision-making? Why BI?
- Pilot project:
 - Background
 - Data Preparation
 - Business Intelligence Tools (MicroStrategy)
 - Lessons

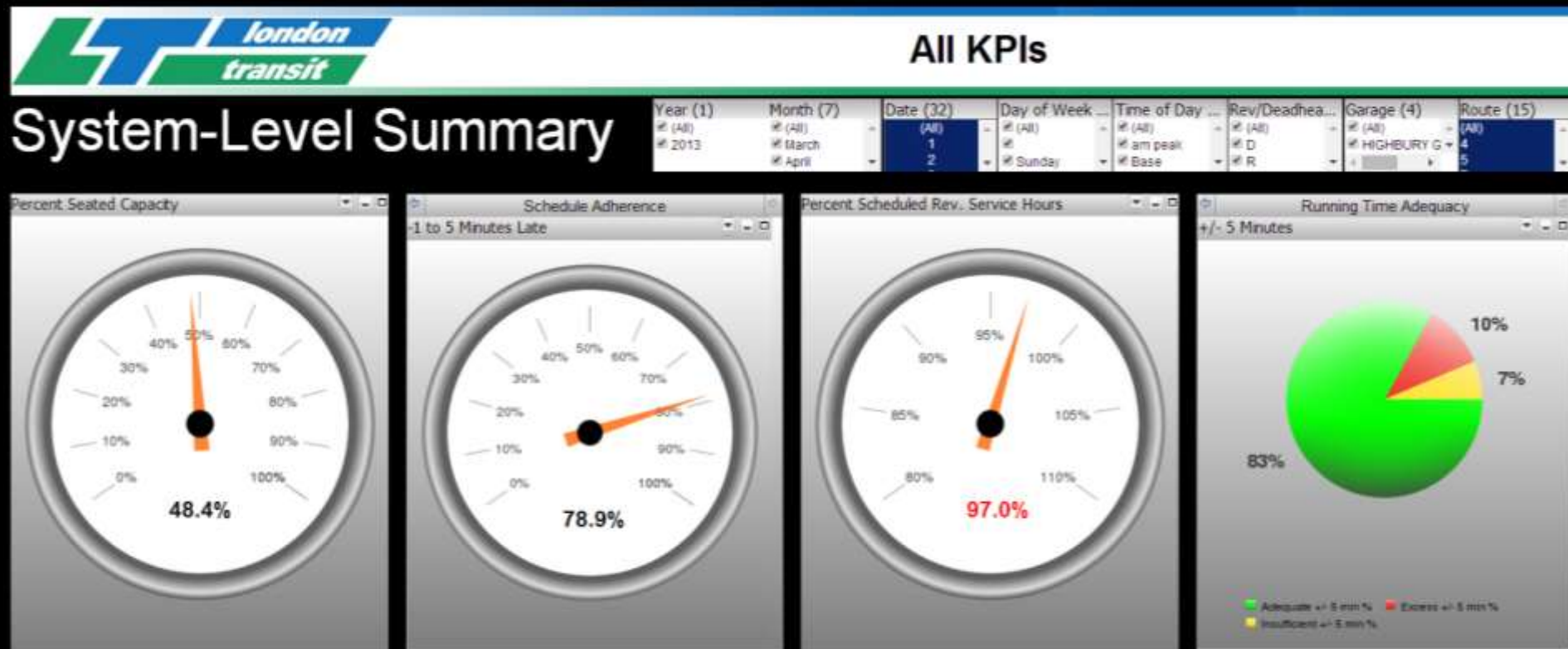
- London [Ontario] Transit Commission, IBI Group, U of T (c/o NSERC)
- Trapeze previously providing basic diagnostic tools as part of CAD/AVL & APC software
- Pilot to produce Key Performance Indicators (KPIs)
 - Percent Seated Capacity
 - Schedule Adherence
 - Overload Events
 - Percent Scheduled Revenue Service Hours
 - Running Time Adequacy

- SQL
- Databases, tables, and columns, oh my!
 data dictionary
- Data joining  → 50-80% of total time
- Data cleaning
 - ~~Over~~ events
- Sample output → Excel → BI tools

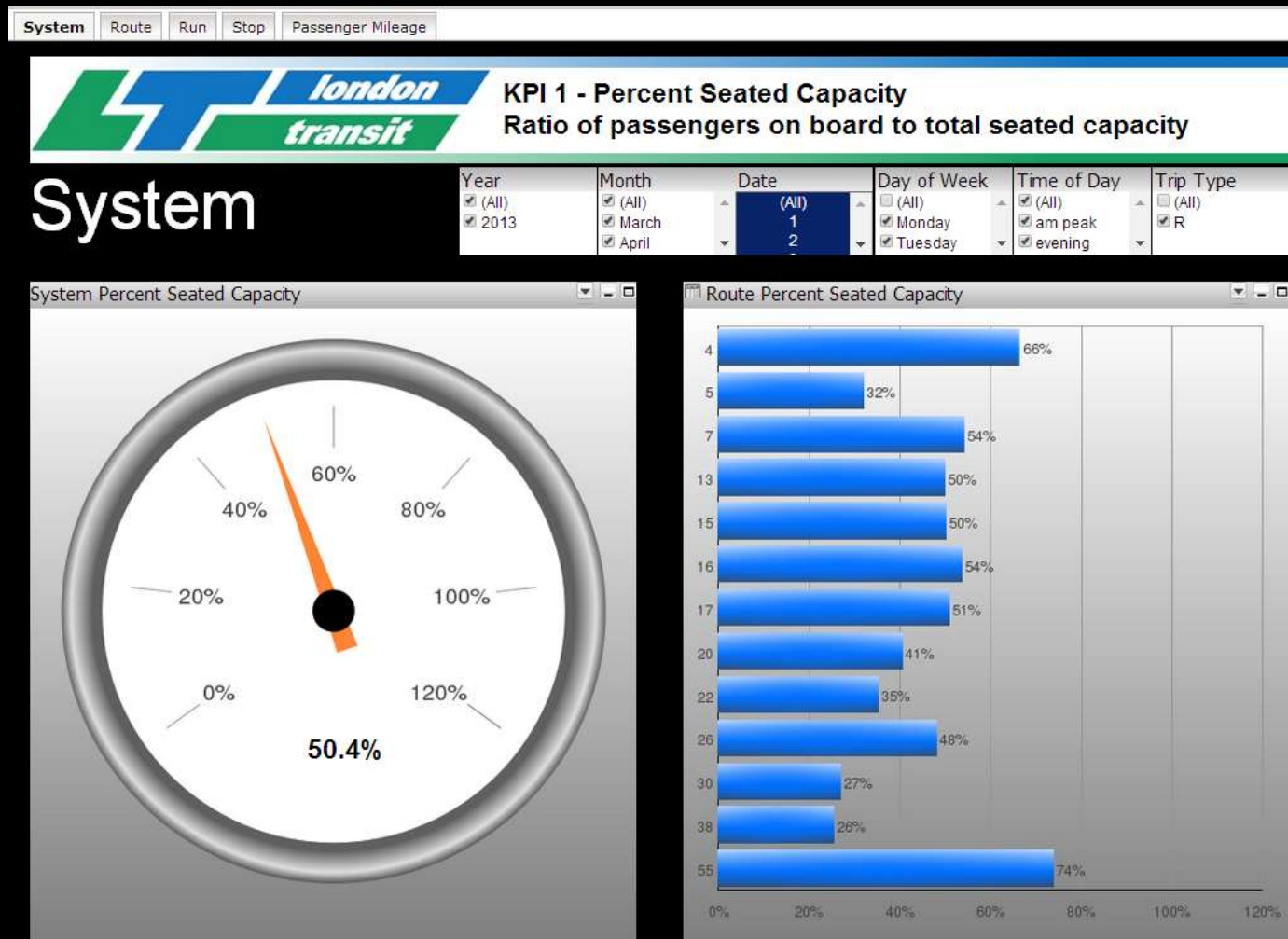
- Microstrategy
- Cloud-based (Analytics Express)
- Demo (screenshots)

Disclaimer: this demo relies on an interim, incomplete sample data set intended for illustrative purposes only.

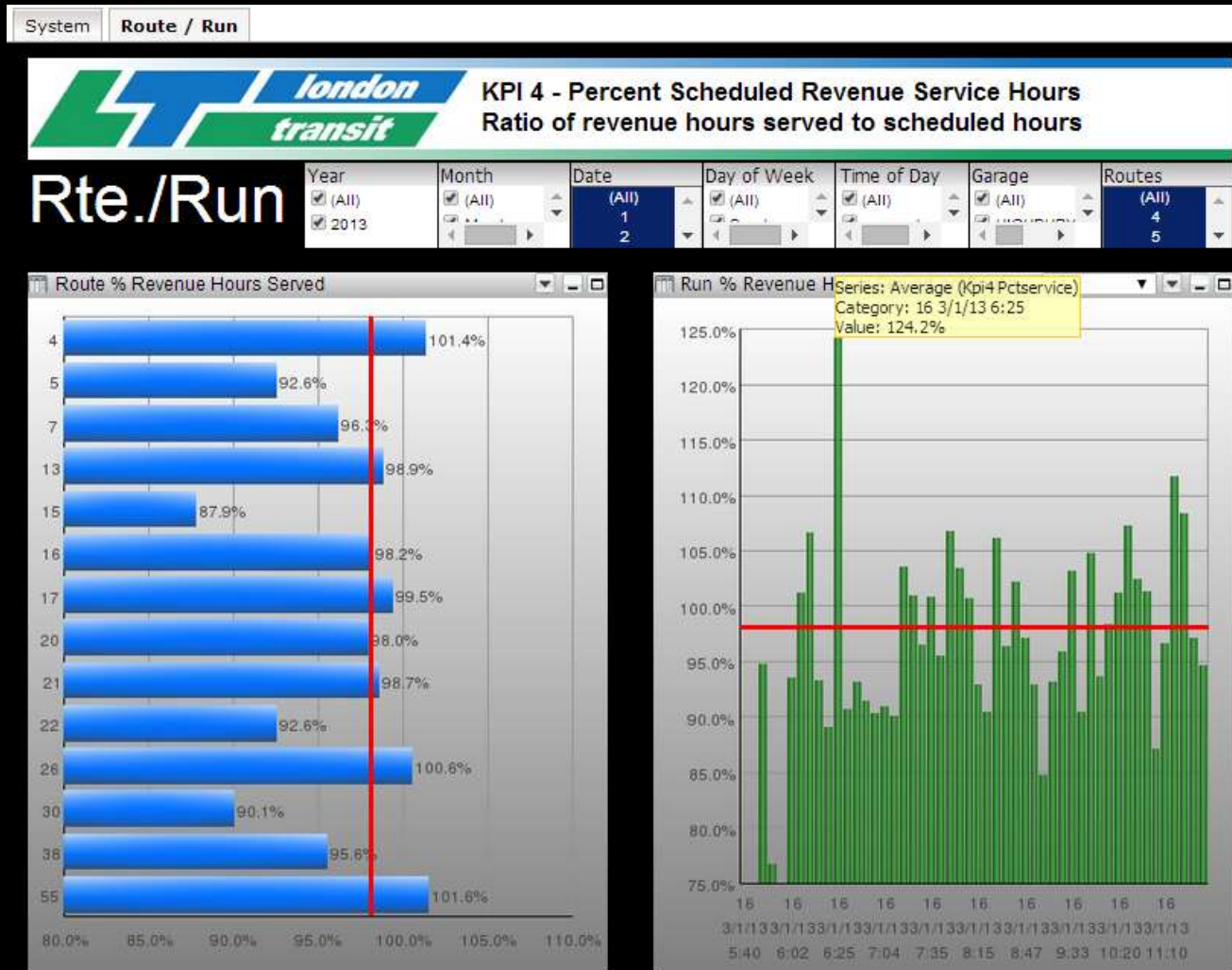
Summary: System level view of all KPIs.



Percent Seated Capacity: Ratio of passengers on board to total seated capacity.



Percent Scheduled Revenue Service Hours: Ratio of revenue hours served to scheduled revenue hours.



Running Time Adequacy: Percentage of timepoints/trips with insufficient, excess, or sufficient run time.



- Acquire data dictionaries / schematics ASAP

- Data

- Allow

- Thoro

- Maint
result



all of your time

n data

s

nd

e

References

- ITS Canada webinar (28 Feb 2013): starring John George (IBI Group), Gerry Akkerman (Translink), Bill Menzies (Dillon Consulting), Dr. Bruce Hellinga (University of Waterloo); hosted by Rajeev Roy (York Region Transit)
- Wilson, N.H.M. (2013, January 25). Making Use of Automated Data Collection to Improve Transit Effectiveness. Bus Rapid Transit Centre of Excellence. Webinar [Video file]. Retrieved from <http://www.youtube.com/watch?v=sWQkxkCuQPY&list=UUQgnrhQ9goiZ7WxL38bf19Q&index=1>
- Zhao, J. (2004). *The Planning and Analysis Implications of Automated Data Collection Systems: Rail Transit OD Matrix Inference and Path Choice Modeling Examples*. Doctoral dissertation, Massachusetts Institute of Technology, Cambridge, United States.
- Image sources:
 - <http://daveberta.ca/wp-content/uploads/2011/06/Money.jpg>
 - <http://www.microstockdiaries.com/are-you-a-quality-microstocker-or-a-quantity-microstocker.html>
 - <http://www.silveroakcasino.com/blog/online-roulette/online-roulette-bonus.html>
 - http://powerlisting.wikia.com/wiki/Black_Hole_Manipulation?file=Supermassive_black_hole.jpeg
 - http://img3.wikia.nocookie.net/__cb20120622020658/simpsons/images/f/fe/Wizard.jpg

Thank you

Acknowledgements:
Dr. Amer Shalaby, U of T
Yuval Grinspun & John George, IBI Group
Patrick Cormier, LTC
Paul Luong, Data Wizard