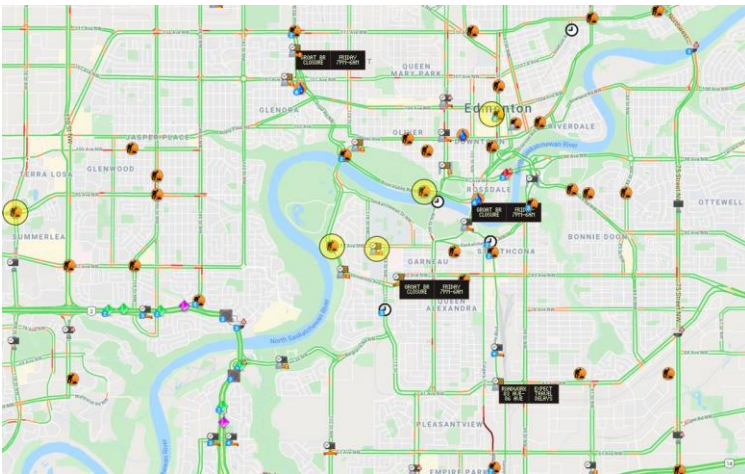


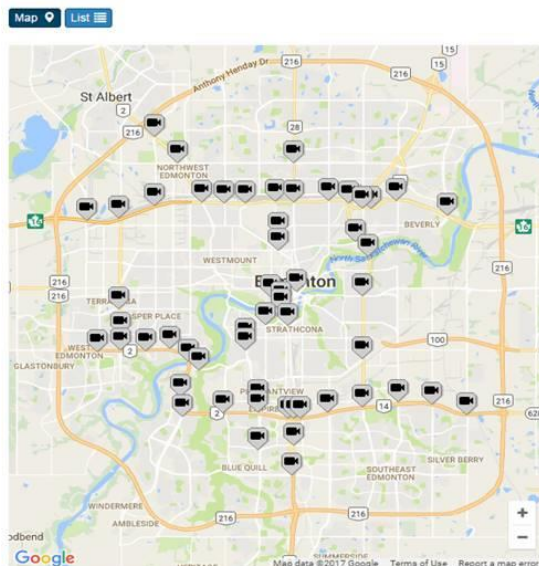
TOUR 1 City of Edmonton Traffic Management Centre (TMC)

The Traffic Management Centre (TMC) operates and maintains the City of Edmonton's traffic signals, traffic control devices, traffic management systems and Intelligent Transportations Systems (ITS). The TMC monitors real-time traffic conditions via CCTV, Vehicle Detection Stations (VDS), media and notifications from various City departments to provide traveller information on the City's fleet of dynamic message signs. The City's central traffic signal system monitors the majority of the City's traffic signals providing the ability to alert for issues, troubleshoot and remotely adjust signal timings. The systems housed in the TMC are valuable tools which allow the City to assign service-related issues for resolution in a timely manner which help improve incident response times and support a safe road network for the citizens of Edmonton.

The TMC is a hub for the City's traffic operations and through leveraging various technologies, inter-departmental relationships and external contractors, a team of dedicated staff manage the daily operations in the Traffic Management Centre helping to improve the safety and efficiency of the City's transportation network.



Edmonton Traffic Cameras



Typical Views Facing

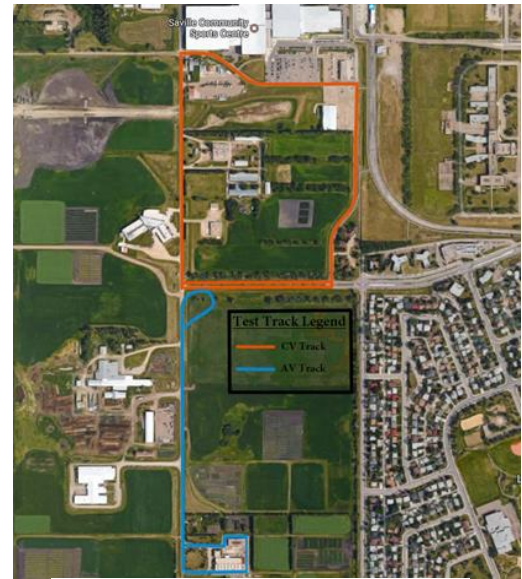


South

Tour 2 ACTIVE Phase 2 Demo: Connected Vehicle Technology in Action

What is ACTIVE-AURORA?

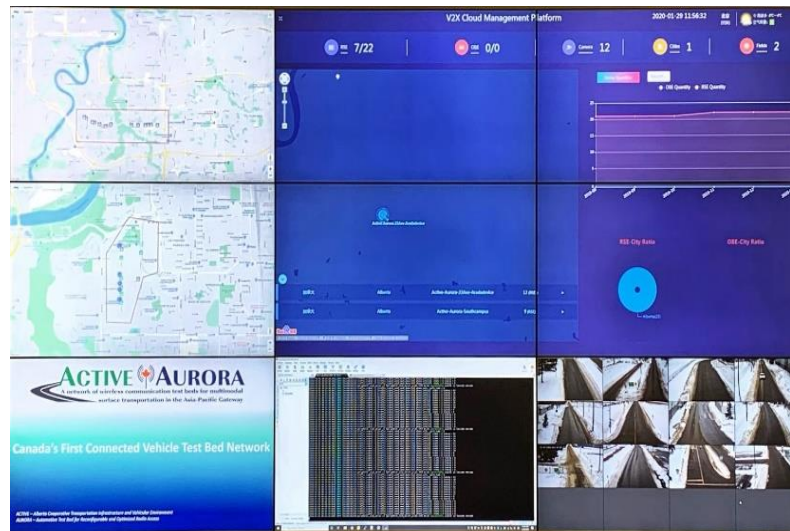
ACTIVE-AURORA is Canada's first connected vehicle test bed network, established with the collaborative support of Transport Canada, Alberta Transportation, City of Edmonton, the University of Alberta Centre for Smart Transportation, University of British Columbia and several industry partners. ACTIVE refers to the original three Edmonton test bed roadways equipped with roadside units—Anthony Henday Drive, Whitemud Drive, and 23rd Ave, while AURORA refers to the Vancouver test beds. ACTIVE Phase 2 is our new addition—a controlled test site at the University of Alberta South Campus. Our focus in these facilities is Vehicle to Everything (V2X) connectedness.



South Campus test track.

What You Will See in the Demo

The ACTIVE Phase 2 demonstration lets you experience the potential of connected vehicle technology to increase safety and efficiency can be achieved for all road users. In our lab you will experience the live V2X Business Operation Support System (BOSS), and a demo case based on both CV2X and DSRC devices. At our South Campus testbed, you will get the chance to see our V2X applications in the field. Guests will be taken through a physical intelligent corridor equipped with RSE, edge computers, signal controllers, and camera monitors. We will demonstrate the benefits of digital infrastructure for drivers when coupled with applications that communicate warning signals, speed advisories, and traffic sign alerts and that coordinate signal controls.



ACTIVE Lab data centre.